



## ASSESSMENT TOOL - INITIAL ASSESSMENT

**My Professional ID (2022-1-IT02-KA210-ADU-000084814)**

LOCATION  
MOBILITY

Braga 30th January - 1st February 2024  
Module Professional Identity Building

EVALUATION CRITERIA															
EVALUATE FROM 1-5 1 Insufficient 2 Enough 3 Sufficient 4 Good 5 Optimal															
<b>Professional Competencies Assessment</b>	1	2	3	4	5	6	7	8	9	10	11	12	13	14	15
Definition and types of professional competencies.	4	4	2	3	3	2	3	4	3	3	3	3	3	3	3
Competency assessment tools.	3	4	1	3	3	2	3	4	2	3	3	3	3	3	3
Identifying personal strengths and areas for improvement.	3	4	2	3	4	3	3	4	3	3	3	4	3	3	4
<b>Soft Skills Assessment</b>															
What soft skills are.	4	4	3	3	4	1	3	4	2	4	3	4	4	3	5
Soft skills assessment tools.	4	4	2	3	2	1	3	4	2	3	3	2	4	3	3
Analyze and identify relevant soft skills.	3	4	2	3	3	1	3	4	2	3	3	3	4	3	3
<b>Building Professional Identity</b>															
Professional goal setting methods.	3	5	1	3	2	2	3	4	2	3	3	3	3	3	3
Personal Branding strategies.	4	4	1	1	2	1	3	4	2	3	3	2	4	3	2
Identify resources and support for building professional identity.	3	4	1	2	3	1	3	3	2	2	3	4	3	3	3
<b>TOTAL</b>	28	37	15	24	26	14	27	35	20	27	27	28	31	27	29

**Initial Assessment - Scale (1-Insuficcient; 2-Enough; 3-Suficient; 4-Good; 5-Optimal)**

**Professional Competencies Assessment**

Initial Assesment Participants	1	2	3	4	5	6	7	8	9	10	11	12	13	14	15
Definition and types of professional competencies.	4	4	2	3	3	2	3	4	3	3	3	3	3	3	3
Competency assessment tools.	3	4	1	3	3	2	3	4	2	3	3	3	3	3	3
Identifying personal strengths and areas for improvement.	3	4	2	3	4	3	3	4	3	3	3	4	3	3	4

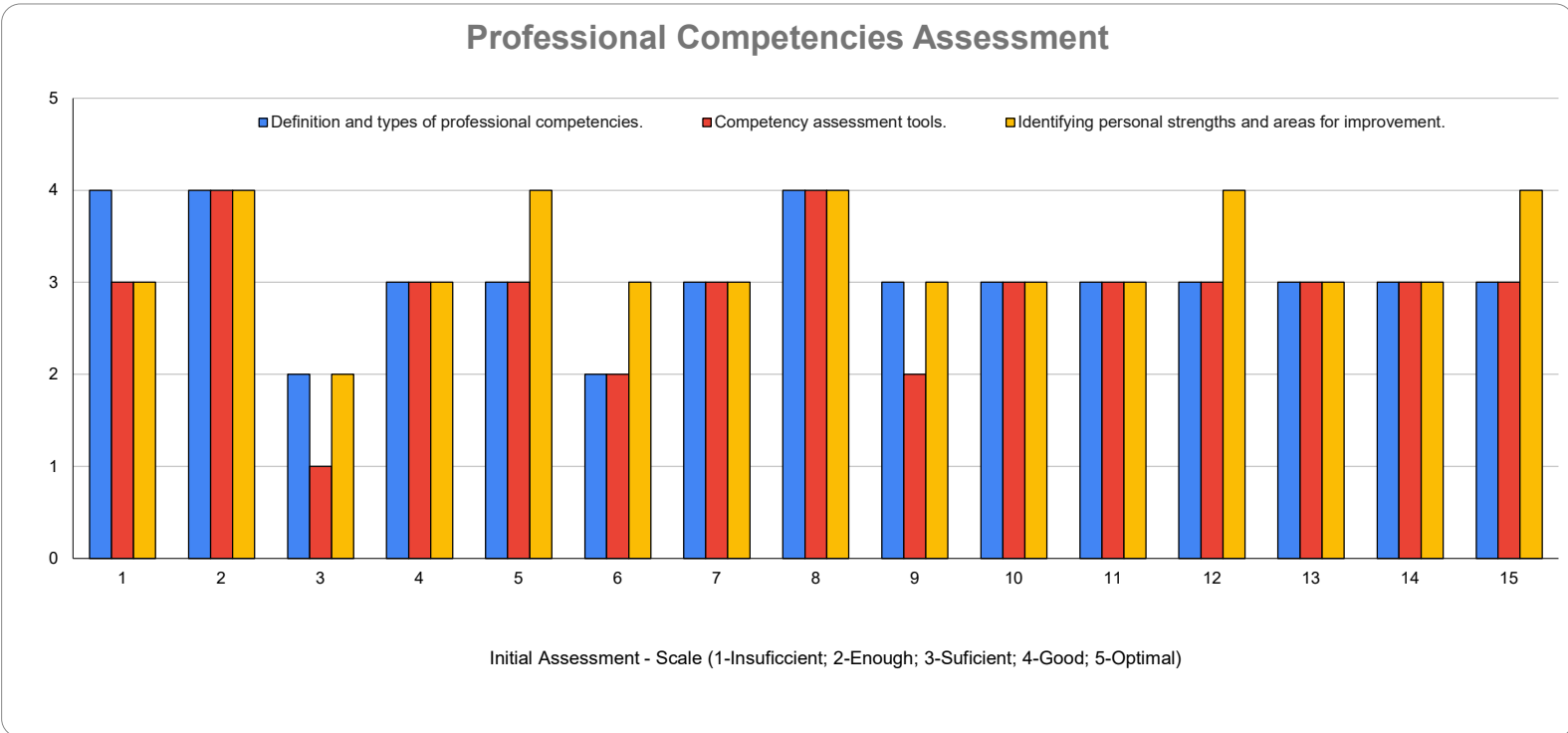
**Soft Skills Assessment**

Initial Assesment Participants	1	2	3	4	5	6	7	8	9	10	11	12	13	14	15
What soft skills are.	4	4	3	3	4	1	3	4	2	4	3	4	4	3	5
Soft skills assessment tools.	4	4	2	3	2	1	3	4	2	3	3	2	4	3	3
Analyze and identify relevant soft skills.	3	4	2	3	3	1	3	4	2	3	3	3	4	3	3

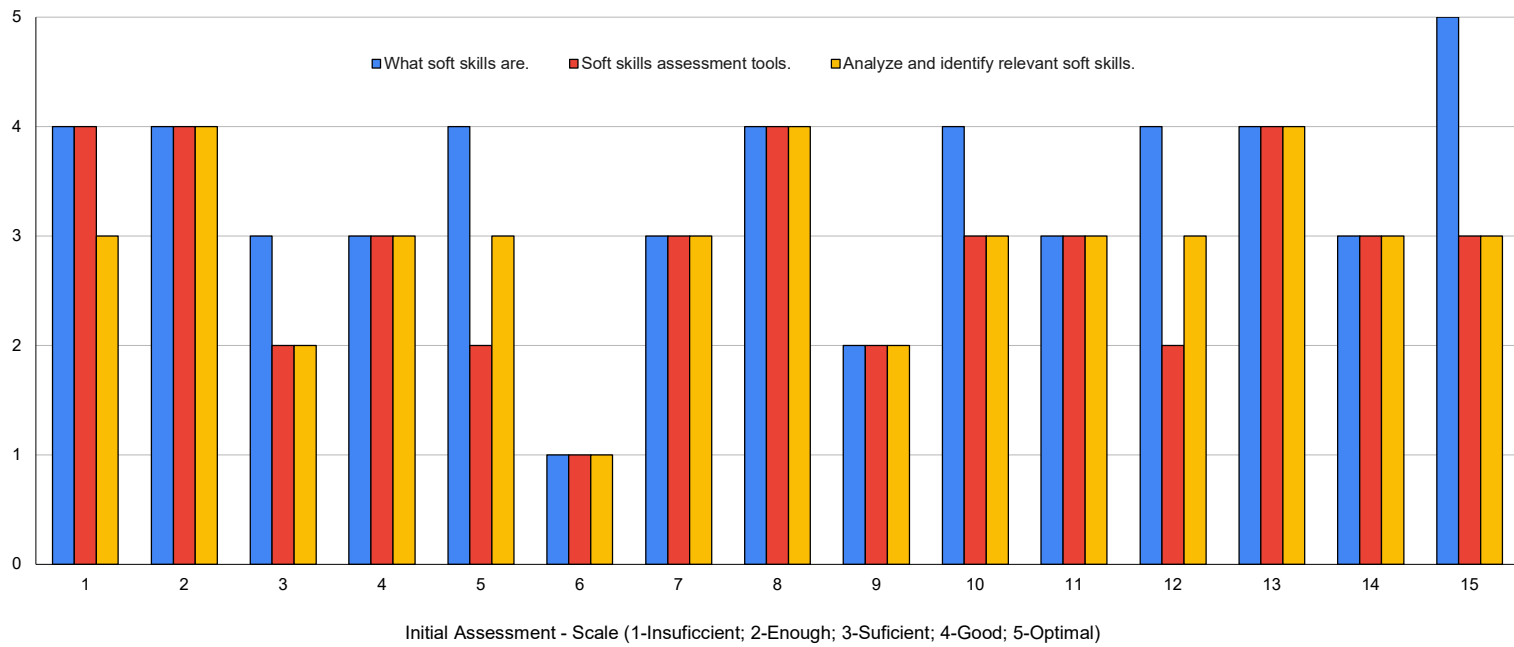
**Building Professional Identity**

Initial Assesment Participants	1	2	3	4	5	6	7	8	9	10	11	12	13	14	15
Professional goal setting methods.	3	5	1	3	2	2	3	4	2	3	3	3	3	3	3
Personal Branding strategies.	4	4	1	1	2	1	3	4	2	3	3	2	4	3	2
Identify resources and support for building professional	3	4	1	2	3	1	3	3	2	2	3	4	3	3	3

Initial Assesment Participants	1	2	3	4	5	6	7	8	9	10	11	12	13	14	15
<b>TOTAL</b>	28	37	15	24	26	14	27	35	20	27	27	28	31	27	29

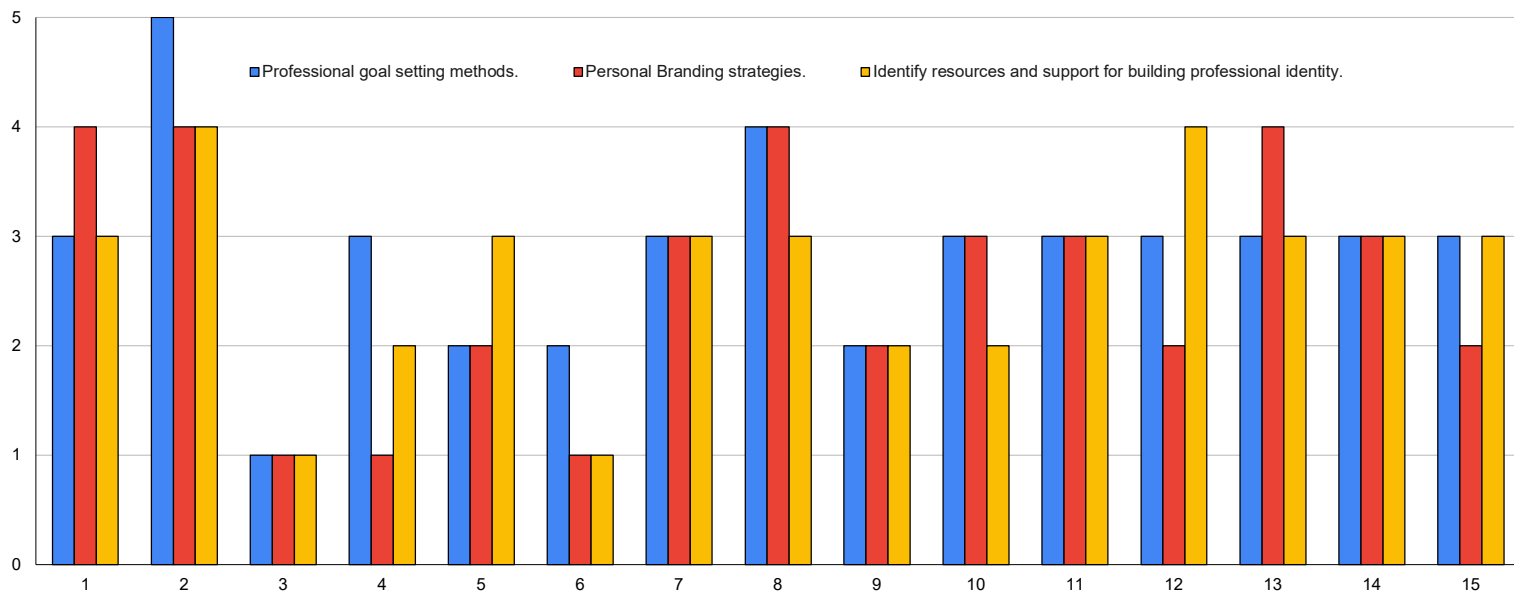


### Soft Skills Assessment



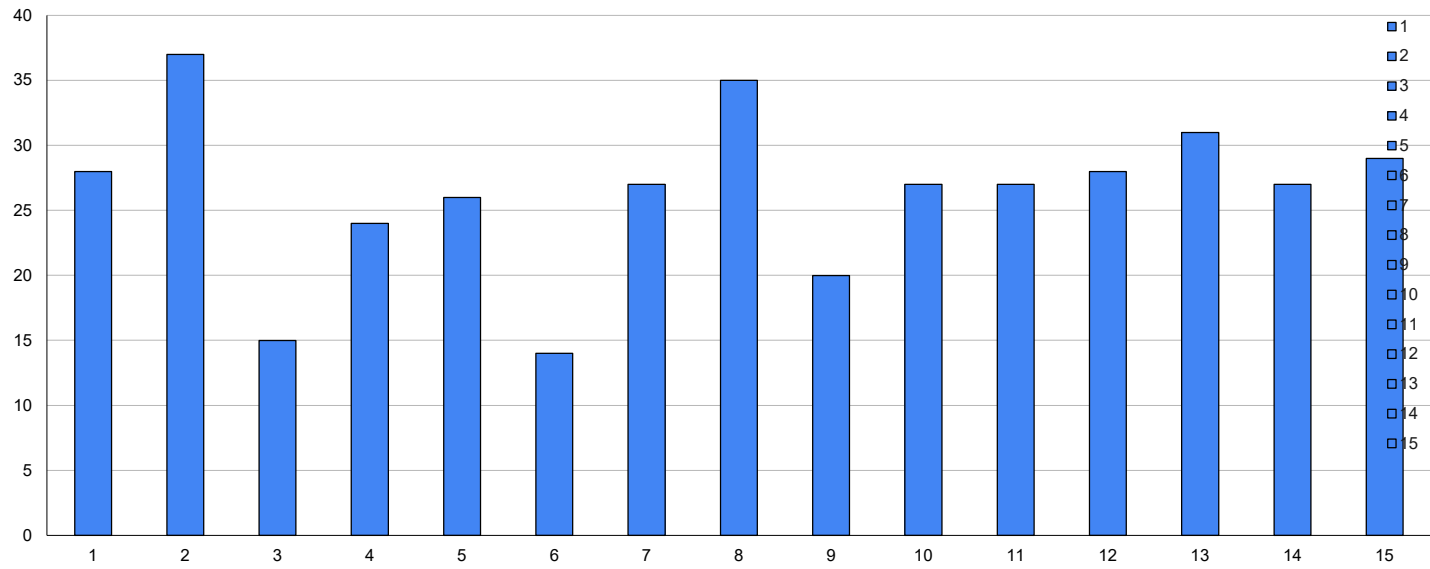
Initial Assessment - Scale (1-Insufficient; 2-Enough; 3-Sufficient; 4-Good; 5-Optimal)

## Building Professional Identity



Initial Assessment - Scale (1-Insufficient; 2-Enough; 3-Sufficient; 4-Good; 5-Optimal)

## TOTAL PONTUATION



Initial Assessment Participants (Max Points 40)



## ASSESSMENT TOOL - FINAL ASSESSMENT

**My Professional ID (2022-1-IT02-KA210-ADU-000084814)**

LOCATION  
MOBILITY

Braga 30th January - 1st February 2024  
Module Professional Identity Building

EVALUATION CRITERIA EVALUATE FROM 1-5 1 Insufficient 2 Enough 3 Sufficient 4 Good 5 Optimal															
	1	2	3	4	5	6	7	8	9	10	11	12	13	14	15
<b>Professional Competencies Assessment</b>															
Definition and types of professional competencies.	5	5	4	5	4	4	5	5	5	5	5	4	5	5	1
Competency assessment tools.	4	5	4	5	5	4	5	5	5	5	5	5	5	5	3
Identifying personal strengths and areas for improvement.	4	5	4	5	5	3	5	5	5	5	4	4	5	4	4
<b>Soft Skills Assessment</b>															
What soft skills are.	5	5	5	5	5	4	5	5	5	5	5	5	5	5	5
Soft skills assessment tools.	4	5	4	5	5	4	5	5	5	5	5	4	5	5	4
Analyze and identify relevant soft skills.	5	5	5	4	5	4	5	5	5	5	4	4	5	5	4
<b>Building Professional Identity</b>															
Professional goal setting methods.	4	5	5	4	5	4	5	5	5	5	4	4	5	4	4
Personal Branding strategies.	5	5	4	4	4	3	5	5	5	5	5	3	5	4	3
Identify resources and support for building professional identity.	4	5	4	5	5	4	5	5	5	5	5	5	5	4	4
<b>TOTAL</b>	35	45	39	42	43	34	45	45	45	45	42	38	45	41	32

**Final Assessment - Scale (1-Insufficient; 2-Enough; 3-Sufficient; 4-Good; 5-Optimal)**

**Professional Competencies Assessment**

Final Assessment Participants	1	2	3	4	5	6	7	8	9	10	11	12	13	14	15
Definition and types of professional competencies.	5	5	4	5	4	4	5	5	5	5	5	4	5	5	1
Competency assessment tools.	4	5	4	5	5	4	5	5	5	5	5	5	5	5	3
Identifying personal strengths and areas for improvement.	4	5	4	5	5	3	5	5	5	5	4	4	5	4	4

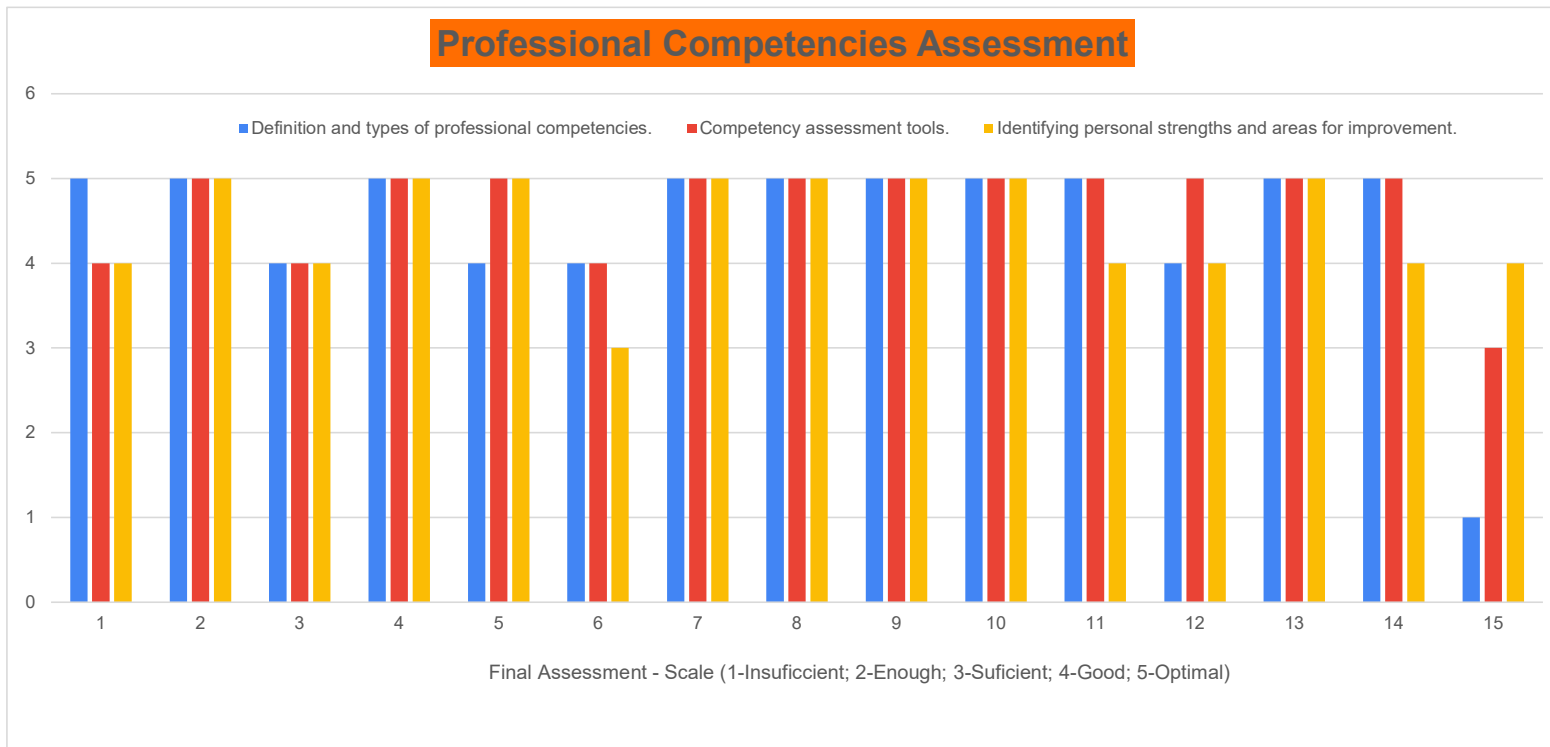
**Soft Skills Assessment**

Final Assessment Participants	1	2	3	4	5	6	7	8	9	10	11	12	13	14	15
What soft skills are.	5	5	5	5	5	4	5	5	5	5	5	5	5	5	5
Soft skills assessment tools.	4	5	4	5	5	4	5	5	5	5	5	4	5	5	4
Analyze and identify relevant soft skills.	5	5	5	4	5	4	5	5	5	5	4	4	5	5	4

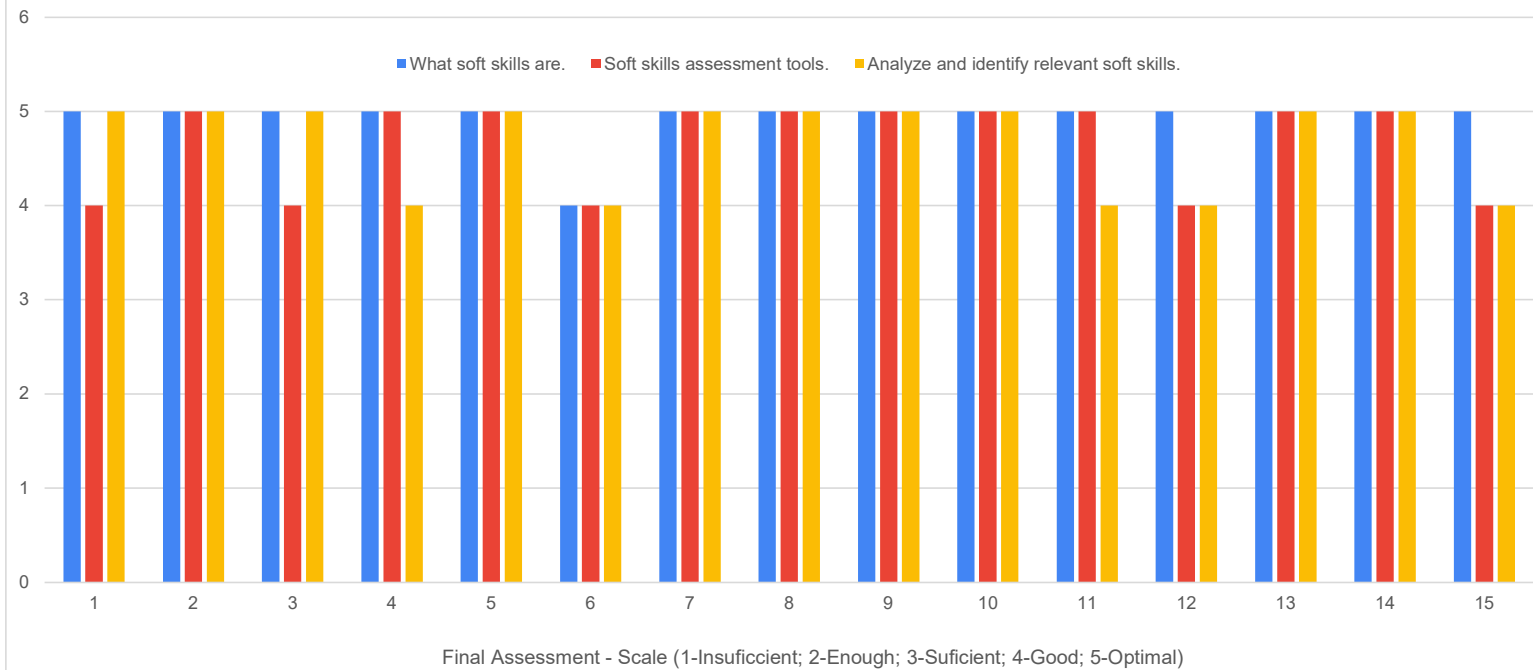
**Building Professional Identity**

Final Assessment Participants	1	2	3	4	5	6	7	8	9	10	11	12	13	14	15
Professional goal setting methods.	4	5	5	4	5	4	5	5	5	5	4	4	5	4	4
Personal Branding strategies.	5	5	4	4	4	3	5	5	5	5	5	3	5	4	3
Identify resources and support for building professional identity.	4	5	4	5	5	4	5	5	5	5	5	5	5	4	4

Final Assessment Participants	1	2	3	4	5	6	7	8	9	10	11	12	13	14	15
<b>TOTAL</b>	35	45	39	42	43	34	45	45	45	45	42	38	45	41	32

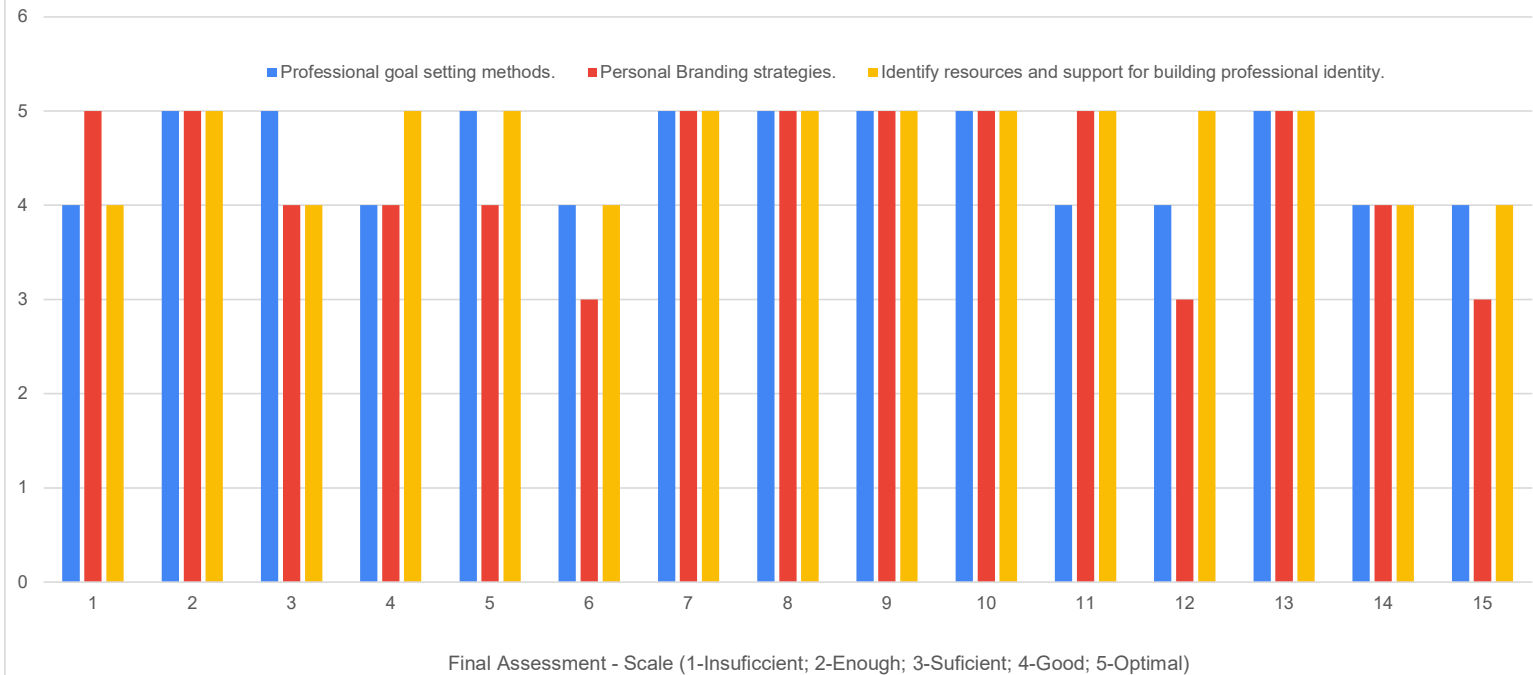


## Soft Skills Assessment





## Building Professional Identity



Final Assessment - Scale (1-Insufficient; 2-Enough; 3-Sufficient; 4-Good; 5-Optimal)

